

An aerial photograph of a lush green golf course. In the foreground, a dark blue pond curves along the edge of a green. A sand trap is visible on the green. The background is filled with dense tropical trees under a clear blue sky. A large, semi-transparent circular graphic with abstract shapes is overlaid on the right side of the image.

Zeight

BAHÍA GOLF RESIDENCES



Overlooking the 7th & 8th fairways of Jack Nicklaus's Signature Bahia Golf Course, Punta Mita is proud to present its latest collection of exclusive Golf residences. While enjoying the expansive golf views 7 Eight Bahia Golf Residences homeowners can comfortably stroll to Punta Mita's Pacifico Beach Club. Form part of a unique Golfing community of Four 3-Story Buildings with four bedrooms and spacious entertaining, terrace areas as well as a plunge pool.



*View from the Pacific Ocean Renderings are intended to be graphic representations for illustrative purposes only, and final finishing and design plans are subject to change.



*View from the Pacific Ocean Renderings are intended to be graphic representations for illustrative purposes only, and final finishing and design plans are subject to change.



*View from the Pacific Ocean Renderings are intended to be graphic representations for illustrative purposes only, and final finishing and design plans are subject to change.

BUILDING 1 & 2



INTERIOR AREA: 308 m²

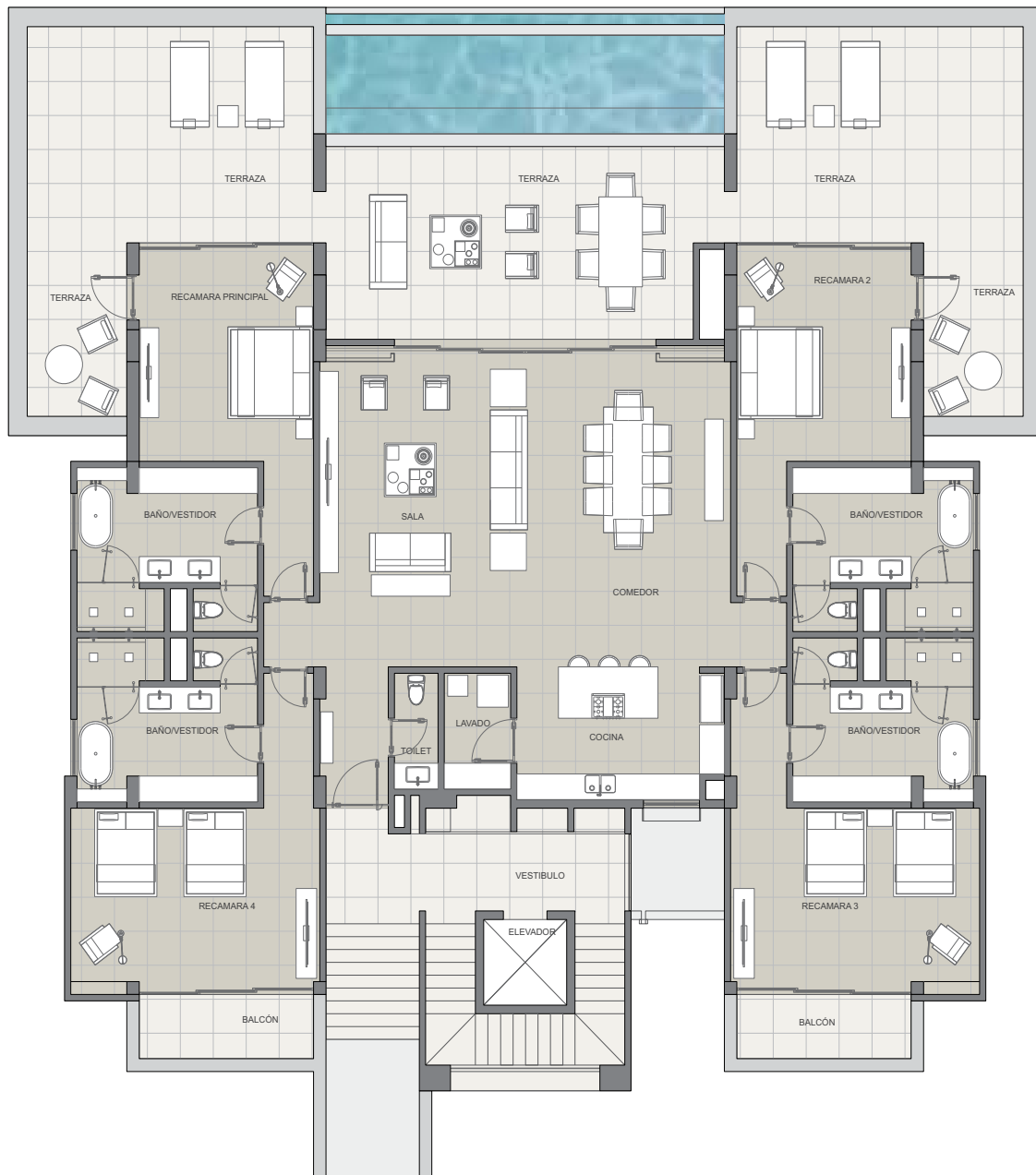
EXTERIOR AREA: 83 m²

POOL: 28 m²

TOTAL AREA: 419 m²

Preliminary project subject to change without notice, images are merely informative, therefore they do not represent any manifestation whatsoever of how project will be or will be finished, as it is merely a project and, in any case, it only corresponds to the project's first phase.

BUILDING 1 & 2 | GROUND FLOOR



INTERIOR AREA: 308 m²

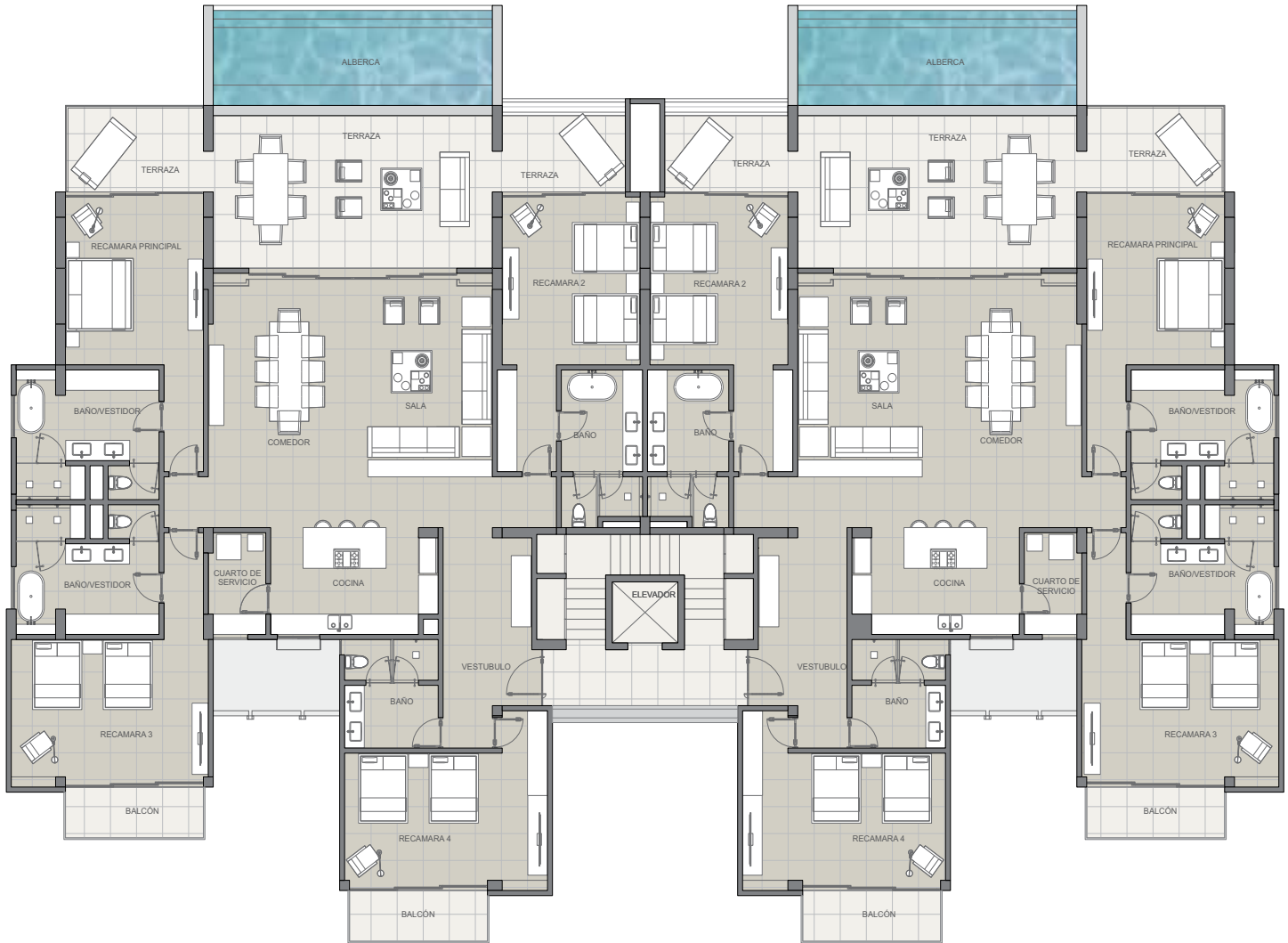
EXTERIOR AREA: 173 m²

POOL: 28 m²

TOTAL AREA: 509 m²

Preliminary project subject to change without notice, images are merely informative, therefore they do not represent any manifestation whatsoever of how project will be or will be finished, as it is merely a project and, in any case, it only corresponds to the project's first phase.

BUILDING 3 & 4



INTERIOR AREA: 293 m²

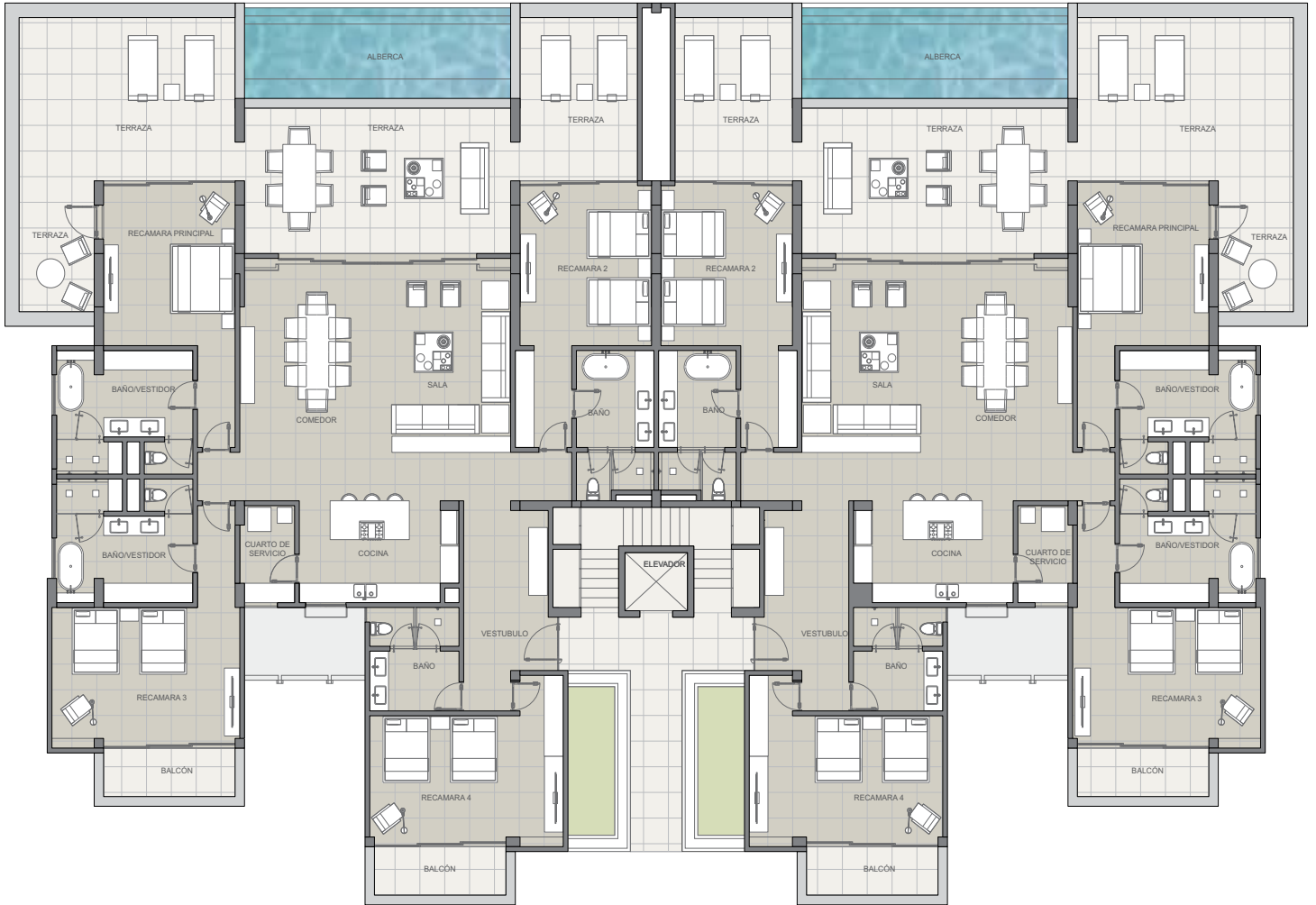
EXTERIOR AREA: 77 m²

POOL: 25 m²

TOTAL AREA: 395 m²

Preliminary project subject to change without notice, images are merely informative, therefore they do not represent any manifestation whatsoever of how project will be or will be finished, as it is merely a project and, in any case, it only corresponds to the project's first phase.

BUILDING 3 & 4 | GROUND FLOOR



INTERIOR AREA: 293 m²

EXTERIOR AREA: 135 m²

POOL: 25 m²

TOTAL AREA: 453 m²

Preliminary project subject to change without notice, images are merely informative, therefore they do not represent any manifestation whatsoever of how project will be or will be finished, as it is merely a project and, in any case, it only corresponds to the project's first phase.



PUNTA MITA REAL ESTATE CENTER
México +52.329.291.6500 | 01.800.007.6482 · USA 1.888.647.0979 · Canada 1.877.783.7976 ·
info@puntamita.com · www.puntamita.com

Development by CANTILES DE MITA, S.A. DE C.V. This is not intended to be an offer, or a solicitation of offers, to buy real estate or any other tangible or intangible asset in Punta Mita by residents of any jurisdiction where prohibited by law or where the project is not registered for sale as required by applicable law. Planned development, including but not limited to pricing, specifications and amenities is subject to change or modifications without further notice.

The names "Punta Mita" and "DINE" as well as their logos are Registered Trademarks of Cantiles de Mita, S.A. de C.V. and DINE S.A.B. de C.V. respectively, and may not be used by third parties without the prior written consent of their owners.

